

Surftest SJ USB Communication
Ver. 3.000A (English)
(Complimentary)

Surface Roughness Tester
SJ-500/SV-2100

User's Manual

Read this Manual thoroughly before operating the instrument.
After reading, retain it close at hand for future reference.

About this software

Surftest SJ USB Communication

Surface Roughness Tester

Quick inspection certificate generation program

Ver. 3.000A (English Edition)
(Complimentary)

Copyright © 2010 Mitutoyo Corporation. All rights reserved.

About this user's manual

Mitutoyo assumes no liability to any party for any loss or damage, direct or indirect,
Caused by use of this software not conforming to this manual.
Information in this document is subject to change without notice.

Copyright © 2010 Mitutoyo Corporation. All rights reserved.

Notes on Export Regulations

You shall agree to commit no act which would, direct or indirect, violate any law or regulation of U.S., Japan or your country, or any other international treaty, relating to the export or re-export of any commodities, software or technical data. If you would like to export or re-export goods, technologies or software concerning this product, be sure to obtain written consent of Mitutoyo Corporation in advance.

Software License Agreement

PLEASE READ THE FOLLOWING CAREFULLY BEFORE USE.

When you agree to comply with this Software License Agreement, you may use the These Mitutoyo software product named QUICKTOOL.

Make sure you read all of the terms and conditions of this Software License Agreement carefully before installing or using the software product that is distributed with this Agreement.

----- SOFTWARE LICENSE AGREEMENT for QUICKTOOL -----

Mitutoyo Corporation grants to you a non-transferable and non-exclusive license to use of this software program(s), program disk(s), dongle(s) and manual(s) distributed with this Software License Agreement (collectively, hereinafter referred to as the "Software Product"), under the following terms and conditions.

1. License

Mitutoyo Corporation distributes this Software Product free of charge as part of the user service.

You are granted to use the Software Product, when you agree to comply with all of the terms of this Software License Agreement (hereinafter referred to as the "License Agreement").

Installation or use of the Software Product constitutes your acceptance of all of the terms of this License Agreement and your agreement to be bound by and become a party to this License Agreement. If you do not agree with all the terms of this License Agreement, you may not use the Software Product.

This license hereunder allows you to use the software and install on any computer, provided that you may use the Software in order to apply it only to the Mitutoyo products.

Mitutoyo Corporation may immediately terminate this License Agreement, if you fail to comply with any of terms of this License Agreement. In such a case, you must not use any of the Software Product and must return all of the Software Product to Mitutoyo Corporation, and must destroy all copies of the Software Product.

The Software Product is licensed, not given, to you for use only under the terms of this License Agreement. You have no right to the Software Product except as expressly granted in this License Agreement. All rights not expressly granted herein are reserved by Mitutoyo Corporation.

2. Copy restrictions

Except as expressly granted under this License Agreement, you may not copy any of the Software Product.

You may not assign, rent, lease, sublicense, lend, distribute or otherwise transfer this License Agreement, the rights granted under this License Agreement, the Software Product, or other items contained in this software package, to a third party without the prior written consent of Mitutoyo Corporation.

You may make copy of this Software Product to use only for you. You should make a complete copy consisting of all of the Software Product files, including this document file.

You may not reverse engineer, disassemble, decompile or modify the Software Product in whole or in part.

3. Limited warranty

You assume all responsibility for all results arising out of your selecting, purchasing, installing or using the Software Product in order to achieve your intended results.

4. Disclaimer

The Software Product is provided "As Is" and without any warranties of any kind, either expressed or implied, including merchantability, fitness for a particular purpose.

In no event shall Mitutoyo Corporation be liable to you, any person or any entity for any direct, indirect, incidental, special or consequential damages whatsoever (including, without limitation, damages for loss of business profits, business interruption, loss of business information, or any other pecuniary loss) arising of the use of or inability to use the Software Product, however caused, regardless of the theory of liability (contract, tort or otherwise) and even if Mitutoyo Corporation has been advised of the possibility of such damages.

5. Governing law and Jurisdiction

This License Agreement shall be interpreted and construed in accordance with the laws of Japan, without regard to conflicts of law principles. You agree to submit to the exclusive jurisdiction of the courts in Tokyo in Japan with respect to any dispute, controversy or claim arising out of, relating to or in connection with this License Agreement or the use of or inability to use the Software Product.

1

INSTALLATION

Execute the setup.exe file after downloading. To start setup of the application, perform installation according to guidance.

However, if the old version has been installed, be sure to execute the procedure in “5. UNINSTALLATION”, and then perform installation.

After installation has been completed, turn on the power to the control unit and connect the PC and control unit with the USB cable (Parts No.12AAH490 or AB type as a commercial product).

Windows7 / 8 : When [Device driver software was not successfully installed] is displayed, follow the procedures below to install the USB connection driver manually. Click [Start] → Click [Devices and Printers] → Select [Unknown device] → Click [Hardware] tab → Click [Properties] → Click [Change setting] → Click [Update Driver] → Select [Browse my computer for driver software] → Click [Browse] to specify [DLL] folder → Click [Ok] → Click [Next] → Select [Install this driver software anyway] and the installation is started.

If it is unable to install by the above method, follow the procedures below:

Click [start] → Select [Devices and Printers] → Select [Unknown device] → Click [Hardware] tab → Click [Properties] → Click [Change setting] → Click [Update Driver] → Select [Browse my computer for driver software] → Select [Let me pick from a list of device drivers on my computer] → Select [Show All Device] → Click [Next] → Select [Have Disk] → Click [Browse] to specify [DLL\SJ-INF] folder → Select [SJ-500.inf] → Select [SJ-500] from [Show compatible hardware] → Click [Next] → Select [Install this driver software anyway] and the installation is started.

Windows XP / Vista: When [Found New Hardware Wizard] is displayed, follow the procedures below to install the USB connection driver. Select [Install from a list or specific location] → Click [Next] → Select [Search for the best driver in these locations] and check [Include this location in the search] → Click [Browse] to specify [DLL\SJ-INF] folder → Click [Ok] → Click [Next] and the installation is started.

To start this program, Excel supplied from Microsoft Corporation (US) needs to have been installed. For information about the operating environment, refer to “6. OPERATING ENVIRONMENT AND OTHERS”.

NOTE

The USB cable (Parts No.12AAH490) is not a standard accessory. It needs a separate order. AB type for commercial product.

2

START-UP

- (1) Start SJ-500[SV-2100] from the Surftest SJ USB Tools menu in the Windows Start Programs. If the PC and control unit are properly connected at this time, authentication of the connection is automatically performed and the Measurement Data Read screen is displayed.
- (2) When the application is used for the first time, it is necessary to perform authentication of the connection between the PC and control unit. If authentication of the connection is not complete, it is not possible to use the application independently with the control unit unconnected to the PC.

CAUTION: If authentication of the connection is not complete, message ***“Please confirm the connection with SJ controller.”*** is displayed.

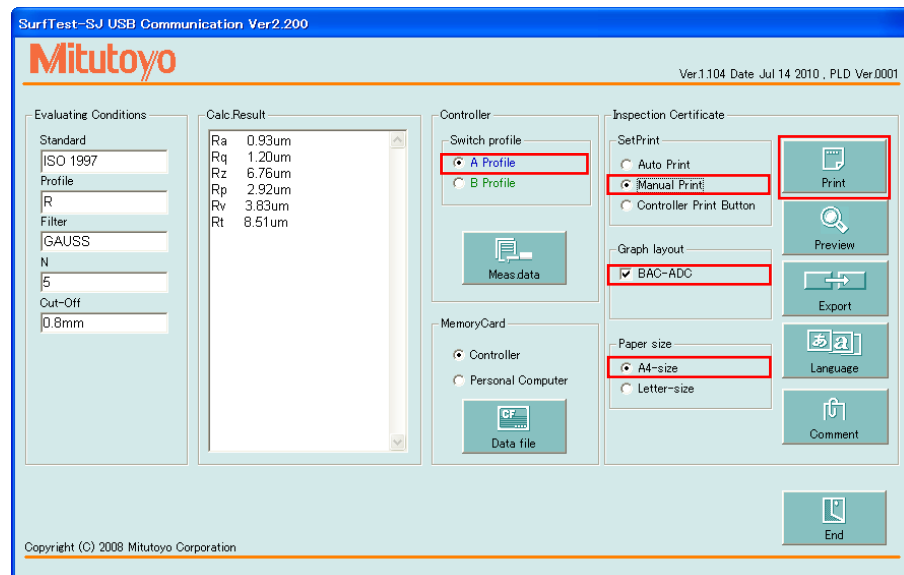
- (3) If the control unit is not connected, the buttons related to the control unit are disabled.
- (4) If the buttons related to the control unit are disabled even with the control unit connected, there is some anomaly in communication. If this is the case, quit the application once and then restart it after checking the connection with the control unit.
- (5) If the software is started with the control unit connected, language will be the same as the one displayed in the control unit.

NOTE Files required for creating the inspection certificate are saved below:
“C:¥Mitutoyo Surftest¥SJ-500”

3

GENERATING AN INSPECTION CERTIFICATE

- (1) This program can generate a simplified inspection certificate based on calculation results and evaluation profile data.
- (2) Set the evaluation conditions [A] and [B] of SJ-500 [SV-2100] to perform measurement.
- (3) Click SJ-500[SV-2100] from the SurfTest SJ USB Communication menu in the Windows Start Programs to start SurfTest SJ USB Communication.
- (4) Select [[A]Profile] in the Profile Selection box on the screen of SurfTest SJ USB Communication.
- (5) Select [Automatic Print] from the Print Method box.
- (6) Select the check box of [BAC-ADC Display] in the Graph Layout box.
- (7) Select either A4-size or letter-size print sheet.
- (8) Click the [Print] button. The program automatically executes data loading from the control unit, inspection certificate generation, and inspection certificate print in this order.
- (9) The evaluation conditions and calculation results of loaded data can be also confirmed on the screen of SurfTest SJ USB Communication.



NOTE In the inspection certificate, 24 parameters can be displayed at maximum.

4

DESCRIPTION OF EACH FUNCTION

- | | |
|----------------------------|---|
| (1) [Evaluation Condition] | Displays evaluation conditions such as standard and profile of loaded data. |
| (2) [Calculation Result] | Displays calculation results of loaded data. |
| (3) [Profile Selection] | Selects a profile of which data to be loaded from the control unit. |
| (4) [Measurement Data] | Loads the measurement conditions, calculation results, and evaluation profile data of a profile selected from the control unit. |
| (5) [Print Method] | <p>Auto Print: Automatically loads data from the control unit, generates and prints an inspection certificate.</p> <p>Manual Print: Generates and prints an inspection certificate using already loaded data.</p> <p>[Print] button on the Control Unit: Pressing the [Print] button on the control unit performs data loading from the control unit, inspection certificate generation and print.</p> <p>CAUTION: If the control unit system version is Ver.1.103 or older, the Print button on the control unit is not available.</p> |
| (6) [Graph Layout] | <p>BAC-ADC Display: Displays a BAC-ADC graph on an inspection certificate.</p> <p>Evaluation Profile Enlargement: Displays an enlarged evaluation profile if no BAC or ADC is displayed.</p> |
| (7) [Paper size] | Either A4-size or letter-size print sheet can be selected. |
| (8) [Print] | Prints an inspection certificate according to a specified print method. |
| (9) [Print Preview] | Displays the print image of an inspection certificate. During the print preview mode, the Surftest SJ USB Communication screen is minimized. When the print preview mode exits, the Surftest SJ USB Communication screen is restored to the original size. |
| (10) [Export] | An inspection certificate can be saved as a file excluding the Excel macro function. For details about the saving method, refer to the Excel |

Operation Manual.

(11) [Language Selection] Allows a language displayed on an inspection certificate to be switched.

(12) [Comment] Allows edition of a comment in an inspection certificate.

CAUTION: If a language is switched to another, a comment is changed to the default setting.

(13) [Memory Card] Control unit: Allows data in a memory card inserted in the control unit to be loaded.

PC: Allows SJ-500 [SV-2100] data saved in a memory card connected to a PC or contained in a folder to be loaded.

CAUTION: The format of the files to be loaded among those saved in a memory card is limited to the text file format. Perform setting in order of Control Unit, Environment Setting, Memory Card, Text File, and Save.

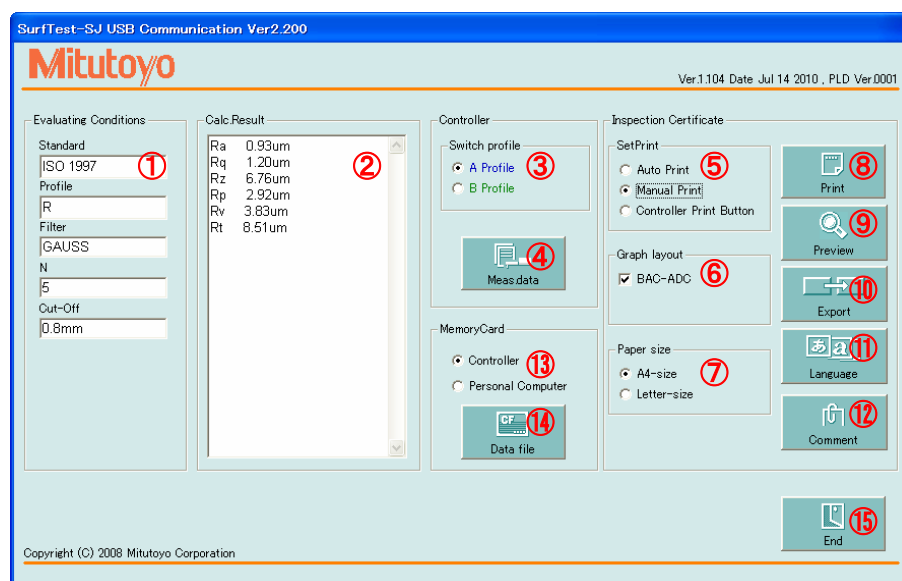
[Data File] Displays the data file list of SJ-500 [SV-2100] saved in a memory card.

CAUTION: When data is loaded from a memory card, a print method is switched to Manual Print. Also, since no BAC or ADC graph data is saved in a memory card, the check box of BAC-ADC Display is deselected. To continue generation of an inspection certificate, click the [Print] button.

(14) [Data File] Select a file from the list and then click the [Call] button.

CAUTION: If the control unit system version is Ver.1.103 or older, the [B] profile cannot be selected.

(15) [Exit] Quits SurfTest SJ USB Communication.



5

UNINSTALLATION

- (1) Select [Start], [Settings], and [Control Panel] menus in this order to open the control panel, and then double-click the [Add/Remove Programs] icon.
- (2) Select an old version program from the list of the [Install/Uninstall] tab and then click the [Add/Remove...] button.
- (3) A message to confirm whether to remove is displayed. Click the [Yes] button.

6

OPERATING ENVIRONMENT AND OTHERS

- (1) Operation verified environment

OS	Windows XP-SP3 / Vista / Windows7 / Window8 (32Bit/64Bit)
Excel	Excel 2000 / 2002 / 2003 / 2007 / 2010
Display	800 X 600 dots or more, high color (16 bits) or better

- NOTE**
- For Windows Vista Business or later / Windows7 / Windows8, it is required to run Surftest SJ USB Communication as an administrator.
 - It may not operate properly, if the security level of the Excel is high.

- (2) Windows is a trademark of Microsoft Corporation.
- (3) Excel is a registered trademark of Microsoft Corporation.
- (4) Other corporate and product names that appear in this manual are generally their trademarks or registered trademarks.

SERVICE NETWORK

Europe

Mitutoyo Europe GmbH

Borsigstrasse 8-10, 41469 Neuss, GERMANY
TEL:49(2137)102-0 FAX:49(2137)102-351

Germany

Mitutoyo Deutschland GmbH

Borsigstrasse 8-10, 41469 Neuss, GERMANY
TEL:49(2137)102-0 FAX:49(2137)86 85

M3 Solution Center Hamburg

Tempowerkring 9 im HIT-Technologiepark 21079 Hamburg, GERMANY
TEL:49(40)791894-0 FAX:49(40)791894-50

M3 Solution Center Leonberg

Steinbeisstrasse 2, 71229 Leonberg, GERMANY
TEL:49(7152)6080-0 FAX:49(7152)608060

M3 Solution Center Berlin

Paradiesstrasse 208, 12526 Berlin, GERMANY
TEL:49(30)2611 267 FAX:49(30)26 29 209

M3 Solution Center Eisenach

im tbz Eisenach, Heinrich-Ehrhardt-Platz, 99817 Eisenach, GERMANY
TEL:49(3691)88909-0 FAX:49(3691)88909-9

M3 Solution Center Ingolstadt

Ziegeleistrasse 66, 85055 Ingolstadt, GERMANY
TEL:49 (841) 954920 FAX:49 (841) 9549250

U.K.

Mitutoyo (UK) Ltd.

Joule Road, West Point Business Park, Andover, Hampshire SP10 3UX, UNITED KINGDOM

TEL:44(1264)353123 FAX:44(1264)354883

M3 Solution Center Coventry

Unit6, Banner Park, Wickmans Drive, Coventry, Warwickshire CV4 9XA, UNITED KINGDOM

TEL:44(2476)426300 FAX:44(2476)426339

M3 Solution Center Halifax

Lowfields Business Park, Navigation Close, Elland, West Yorkshire HX5 9HB, UNITED KINGDOM

TEL:44(1422)375566 FAX:44(1422)328025

M3 Solution Center East Kilbride

The Baird Bulding, Rankine Avenue, Scottish Enterprise Technology Park, East Killbride G75 0QF, UNITED KINGDOM

TEL:44(1355)581170 FAX:44(1355)581171

France

Mitutoyo France

Paris Nord 2-123 rue de la Belle Etoile, BP 59267 ROISSY EN FRANCE 95957 ROISSY CDG CEDEX, FRANCE

TEL:33(1) 49 38 35 00 FAX:33(1) 48 63 27 70

M3 Solution Center LYON

Parc Mail 523, cours du 3ème millénaire, 69791 Saint-Priest, FRANCE

TEL:33(1) 49 38 35 70 FAX:33(1) 49 38 35 79

M3 Solution Center STRASBOURG

Parc de la porte Sud, Rue du pont du péage, 67118 Geispolsheim, FRANCE

TEL:33(1) 49 38 35 80 FAX:33(1) 49 38 35 89

M3 Solution Center CLUSES

Espace Scionzier 480 Av. des Lacs, 74950 Scionzier, FRANCE

TEL:33(1) 49 38 35 90 FAX:33(1) 49 38 35 99

M* Solution Center TOULOUSE

Aeroparc Saint-Martin ZAC de Saint Martin du Touch 12 rue de Caulet, 31300 Toulouse, FRANCE

TEL:33 (5) 82 95 25 21

Italy

MITUTOYO ITALIANA S.r.l.

Corso Europa, 7 - 20020 Lainate (MI), ITALY
TEL: 39(02)935781 FAX:39(02)9373290*93578255

M3 Solution Center VERONA

Via A. Volta, 37062 Dossobuono (VR), ITALY
TEL:39(045)513012 FAX:39(045)8617241

M3 Solution Center TORINO

Via Brandizzo, 133/F - 10088 Volpiano (TO), ITALY
TEL:39(0)11 9123995 FAX:39(0)11 9953202

M3 Solution Center CHIETI

Contrada Santa Calcagna - 66020 Rocca S. Giovanni (CH), ITALY
TEL/FAX:39(0872)709217

Netherlands

Mitutoyo Nederland B.V.

Storkstraat 40, 3905 KX Veenendaal, THE NETHERLANDS
TEL:31(0)318-534911 FAX:31(0)318-534811

Mitutoyo Research Center Europe B.V.

De Rijn 18, 5684 PJ Best, THE NETHERLANDS
TEL:31(0)499-320200 FAX:31(0)499-320299

Belgium

Mitutoyo Belgium N.V.

Hogenakkerhoek straat 8, 9150 Kruibeke, BELGIUM
TEL:32(0)3-2540444 FAX:32(0)3-2540445

Sweden

Mitutoyo Scandinavia AB

Släntvägen 6, 194 54 Upplands Väsby, SWEDEN
TEL:46(0)8 594 109 50 FAX:46(0)8 590 924 10

M3 Solution Center Alingsas

Kristineholmsvägen 26, 441 39 Alingsas, SWEDEN
TEL:46(0)8 594 109 50 FAX:46(0)322 63 31 62

M3 Solution Center Värnamo

Storgatsbacken 9, 331 30 Värnamo, SWEDEN
TEL:46(0)8 594 109 50 FAX:46(0)370 463 34

Finland

Mitutoyo Scandinavia AB Finnish Branch

Viherkääntäjä 2A, FI-33960, Pirkkala, Finland
TEL: +358 207 929 640

Switzerland

Mitutoyo Schweiz AG

Steinackerstrasse 35, 8902 Urdorf, SWITZERLAND
TEL:41(0)447361150 FAX:41(0)447361151

Poland

Mitutoyo Polska Sp.z o.o.

ul.Minska 54-56, 54-610 Wroclaw, POLAND
TEL:48(71)354 83 50 FAX:48(71)354 83 55

Czech Republic

Mitutoyo Cesko, s.r.o.

Dubská 1626, 415 01 Teplice, CZECH REP
TEL:420-417-579-866 FAX:420-417-579-867

Hungary

Mitutoyo Hungária Kft.

Németvölgyi út 97, H-1124 Budapest, HUNGARY
TEL:36(1)2141447 FAX:36(1)2141448

Romania

Mitutoyo Romania SRL

1A, Drumul Garii Odai Street, Ground Floor, Room G03,
075100 OTOPENI-ILFOV, ROMANIA
TEL:40(0)311012088 FAX:40(0)311012089

Russian Federation

Mitutoyo RUS LLC

13 Sharikopodshipnikovskaya, bld.2, 115088 Moscow, RUSSIAN FEDERATION
TEL:(7)495 7450 752 FAX:(7)495 745 0752

Singapore

Mitutoyo Asia Pacific Pte. Ltd.

24 Kallang Avenue, Mitutoyo Building, SINGAPORE 339415
TEL:(65)62942211 FAX:(65)62996666

Malaysia

Mitutoyo (Malaysia) Sdn. Bhd.

Kuala Lumpur Head Office / M3 Solution Center

Mah Sing Intergrated Industrial Park, 4, Jalan Utarid U5/14, Section U5, 40150 Shah Alam, Selangor, MALAYSIA
TEL:(60)3-78459318 FAX:(60)3-78459346

Penang Branch office / M3 Solution Center

No.30, Persiaran Mahsuri 1/2, Sunway Tunas, 11900 Bayan Lepas, Penang, MALAYSIA

TEL:(60)4-6411998 FAX:(60)4-6412998

Johor Branch office / M3 Solution Center

No. 70, Jalan Molek 1/28, Taman Molek, 81100 Johor Bahru, Johor, MALAYSIA
TEL:(60)7-3521626 FAX:(60)7-3521628

Indonesia

PT. Mitutoyo Indonesia

Head Office / M3 Solution Center

Ruko Mall Bekasi Fajar Blok A6&A7 MM2100 Industrial Town, Cikarang Barat, Bekasi 17520, INDONESIA
TEL:(62)21-8980841 FAX:(62)21-8980842

Thailand

Mitutoyo(Thailand)Co., Ltd.

Bangkok Head Office / M3 Solution Center

No. 76/3-5, Chaengwattana Road, Anusaawaree, Bangkaen, Bangkok 10220, THAILAND

TEL:(66)2-521-6130 FAX:(66)2-521-6136

Cholburi Branch / M3 Solution Center

No.7/1, Moo 3, Tambon Bowin, Amphur Sriracha, Cholburi 20230, THAILAND
TEL:(66)3-834-5783 FAX:(66)3-834-5788

Amata Nakorn Branch / M3 Solution Center

No. 700/199, Moo 1, Tambon Ban Kao, Amphur Phan Thong, Cholburi 20160, THAILAND

TEL:(66)3-846-8976 FAX:(66)3-846-8978

Vietnam

Mitutoyo Vietnam Co., Ltd

Hanoi Head Office / M3 Solution Center

No.34-TT4, My Dinh-Me Tri Urban Zone, My Dinh Commune, Tu Liem District, Hanoi, VIETNAM

TEL:(84)4-3768-8963 FAX:(84)4-3768-8960

Ho Chi Minh City Branch Office / M3 Solution Center

31 Phan Xich Long Street, Ward 2, Phu Nhuan District, Ho Chi Minh City, VIETNAM

TEL:(84)8-3517-4561 FAX:(84)8-3517-4582

India

Mitutoyo South Asia Pvt. Ltd.

Head Office / M3 Solution Center

C-122, Okhla Industrial Area, Phase-I, New Delhi-110 020, INDIA
TEL:91(11)2637-2090 FAX:91(11)2637-2636

Mumbai Region Head office

303, Sentinel Hiranandani Business Park Powai, Mumbai-400 076, INDIA
TEL:91(22)2570-0684, 837, 839 FAX:91(22)2570-0685

Pune Office / M3 Solution Center

G2/G3, Pride Kumar Senate, F.P. No. 402 Off. Senapati Bapat Road, Pune-411 016, INDIA

TEL:91(20)6603-3643, 45, 46 FAX:91(20)6603-3644

Vadodara office

S-1&S-2, Olive Complex, Nr. Haveli, Nizampura, Vadodara-390 002, INDIA
TEL: (91) 265-2750781 FAX: (91) 265-2750782

Bengaluru Region Head office / M3 Solution Center

No. 5, 100 Ft. Road, 17th Main, Kiramangala, 4th Block, Bengaluru-560 034, INDIA

TEL:91(80)2563-0946, 47, 48 FAX:91(80)2563-0949

Chennai Office / M3 Solution Center

No. 624, Anna Salai Teynampet, Chennai-600 018, INDIA
TEL:91(44)2432-8823, 24 FAX:91(44)2432-8825

Kolkata Office

Unit No. 1208,Om Tower, 32,J.L.Nehru Road, Kolkata-700 071
Tel: (91) 33-22267088/40060635 Fax: (91) 33-22266817

Taiwan**Mitutoyo Taiwan Co., Ltd.**

4F., No.71, Zhouzi St., Neihu Dist.,Taipei City 114, TAIWAN (R.O.C.)
TEL:886(2)8752-3266 FAX:886(2)8752-3267

Taichung Branch

16F.-3, No.6, Ln.256, Sec.2, Xitun Rd., Xitun Dist., Taichung City 407, TAIWAN (R.O.C.)

TEL:886(4)2707-1766 FAX:886(4)2451-8727

Kaohsiung Branch

13F.-3, No.31, Haibian Rd., Lingya Dist., Kaohsiung City 802, TAIWAN (R.O.C.)
TEL:886(7)334-6168 FAX:886(7)334-6160

M3 Solution Center Taipei

4F., No.71, Zhouzi St., Neihu Dist., Taipei City 114,TAIWAN (R.O.C.)
TEL:886(2)8752-3266 FAX:886(2)8752-3267

M3 Solution Center Tainan

Rm.309, No.31, Gongye 2nd Rd., Annan Dist., Tainan City 709, TAIWAN (R.O.C.)
TEL:886(6)384-1577 FAX:886(6)384-1576

South Korea**Mitutoyo Korea Corporation****Seoul Head Office / M3 Solution Center**

(Sanbon-Dong, Geumjeong High View Build.), 6F, 153-8, Ls-Ro, Gunpo-Si, Gyeonggi-Do, 435-040 KOREA

TEL:82(31)361-4200 FAX:82(31)361-4201

Busan Office / M3 Solution Center

Donghum Build. 1F, 559-13 Gwaebop-Dong, Sasang-Gu, Busan, 617-809, KOREA
TEL:82(51)324-0103 FAX:82(51)324-0104

Daegu Office / M3 Solution Center

371-12, Hosan-Dong, Dalseo-Gu, Daegu, 704-230, KOREA
TEL:82(53)593-5602 FAX:82(53)593-5603

China**Mitutoyo Measuring Instruments (Shanghai) Co., Ltd.**

12F, Nextage Business Center, No.1111 Pudong South Road, Pudong New District, Shanghai 200120, CHINA

TEL:86(21)5836-0718 FAX:86(21)5836-0717

Suzhou Office / M3 Solution Center China (Suzhou)

No. 46 Baiyu Road, Suzhou 215021, CHINA
TEL:86(512)6522-1790 FAX:86(512)6251-3420

Wuhan Office

RM. 1206B Wuhan World Trade Tower, No. 686, Jiefang Ave, Jiangnan District, Wuhan 430032, CHINA

TEL:86(27)8544-8631 FAX:86(27)8544-8227

Chengdu Office

RM. D 20/F, No.58 Beixin Road, Jinjiang District, Chengdu, Sichuan 610016, CHINA

TEL:86(28)8671-8936 FAX:86(28)8671-9086

Hangzhou Office

RM. 902, Taifu Plaza No.1 Tonghui (M) Road, Xiaoshan District, Hangzhou 311200, CHINA

TEL:86(571)8288-0319 FAX:86(571)8288-0320

Tianjin Office / M3 Solution Center Tianjin

No.16 Heiniucheng-Road, Hexi-District, Tianjin 300210, CHINA

TEL:86(22)8558-1221 FAX:86(22)8558-1284

Changchun Office

RM.1801, Kaifa Dasha, No. 5188 Ziyou Avenue, Changchun 130013, CHINA

TEL:86(431)8461-2510 FAX:86(431)8464-4411

Qingdao Office / M3 Solution Center Qingdao

No.135-10, Fuzhou North Road, Shibei District, Qingdao City, Shandong 266034, CHINA

TEL:86(532)8066-8887 FAX:86(532)8066-8890

Xi'an Office

RM. 805, Xi'an International Trade Center, No. 196 Xiaozhai East Road, Xi'an, 710061, CHINA

TEL:86(29)8538-1380 FAX:86(29)8538-1381

Dalian Office / M3 Solution Center Dalian

RM. 1008,YOMA IFC,No.128 Jin ma Road,Economic Development Zone, Dalian 116600, CHINA

TEL:86(411)8718 1212 FAX:86(411)8754-7587

Mitutoyo Leeport Metrology (Hong Kong) Limited

1/F., Block 1, Golden Dragon Industrial Center, 152-160 Tai Lin Pai Road, Kwai Chung, N.T., HONG KONG

TEL:86(852)2427-7991 FAX:86(852)2418-4610

Mitutoyo Leeport Metrology (Dongguan) Limited / M3 Solution Center Dongguan

No.26, Guan Chang Road, Chong Tou Zone, Chang An Town, Dong Guan, 523855 CHINA

TEL:86(769)8541 7715 FAX:86(769)-8541 7745

Mitutoyo Measuring Instruments (Suzhou) Co., Ltd.

No. 46 Baiyu Road, Suzhou 215021, CHINA

TEL:86(512)6252-2660 FAX:86(512)6252-2580

U.S.A.**Mitutoyo America Corporation**

965 Corporate Blvd., Aurora, IL 60502, U.S.A.

TEL:1-(630)820-9666 Toll Free No. 1-888-648-8869 FAX:1-(630)820-2614

M3 Solution Center-Illinois

945 Corporate Blvd., Aurora, IL 60502, U.S.A.

M3 Solution Center-Ohio

6220 Hi-Tek Ct., Mason, OH 45040, U.S.A.

TEL:1-(513)754-0709 FAX:1-(513)754-0718

M3 Solution Center-Michigan

44768 Helm Street, Plymouth, MI 48170, U.S.A.

TEL:1-(734)459-2810 FAX:1-(734)459-0455

M3 Solution Center-California

16925 E. Gale Ave., City of Industry, CA 91745, U.S.A.

TEL:1-(626)961-9661 FAX:1-(626)333-8019

M3 Solution Center-Massachusetts

1 Park Dr., Suite 11, Westford, MA 01886, U.S.A.

TEL:1-(978)692-8765 FAX:1-(978)692-9729

M3 Solution Center-North Carolina

11515 Vanstory Dr., Suite 150, Huntersville, NC 28078, U.S.A.

TEL:1-(704)875-8332 FAX:1-(704)875-9273

M3 Solution Center-Alabama

2100 Riverchase Center Suite 106 Hoover, AL 35244, U.S.A

TEL:1-(205)-988-3705 FAX:1-(205)-988-3423

Micro Encoder, Inc.

11533 NE 118th St., bldg. M, Kirkland, WA 98034, U.S.A.

TEL:1-(425)821-3906 FAX:1-(425)821-3228

Canada**Mitutoyo Canada Inc.**

2121 Meadowvale Blvd., Mississauga, Ont. L5N 5N1., CANADA

TEL:1-(905)821-1261 FAX:1-(905)821-4968

Montreal Office

7075 Place Robert-Joncas Suite 129, Montreal, Quebec H4M 2Z2, CANADA

TEL:1-(514)337-5994 FAX:1-(514)337-4498

Brazil**Mitutoyo Sul Americana Ltda.**

AV. Joao Carlos da Silva Borges, 1240 - CEP 04726-002 - Santo Amaro - São Paulo - SP, BRASIL

TEL:55(11)5643-0000 FAX:55(11)5641-3722

Regional Office

Belo Horizonte - MG

TEL:55(31)3531-5511 FAX:55(31)3594-4482

Rio Grande do Sul / PR, SC

TEL/FAX:55(51)3342-1498 TEL:55(51)3337-0206

Rio de Janeiro - RJ

TEL:55(21)3333-4899 TEL/FAX:55(21)2401-9958

Santa Barbara D'Oeste - SP

TEL:55(19)3455-2062 FAX:55(19)3454-6103

Norte, Nordeste, Centro Oeste

TEL:55(11)5643-0060 FAX:55(11)5641-9029

Escritorio BA / SE

TEL/FAX:55(71)3326-5232

Factory(Suzano)

Rodovia Índio Tibirica 1555, BAIRRO RAFFO, CEP 08620-000 SUZANO-SP, BRASIL

TEL:55(11)4746-5858 FAX:55(11)4746-5936

Argentina**Mitutoyo Sul Americana Ltda.****Argentina Branch**

Av. Mitre 891/899 CP(B1603CQD) Vicente Lopez Buenos Aires, ARGENTINA

TEL:54(11)4730-1433 FAX:54(11)4730-1411

Sucursal Cordoba

Av. Amadeo Sabattini, 1296, esq. Madrid B° Crisol Sur – CP 5000, Cordoba, ARGENTINA

TEL/FAX:54 (351) 456-6251

Mexico**Mitutoyo Mexicana, S. A. de C. V**

Prolongación Industria Eléctrica No. 15 Parque Industrial Naucalpan

Naucalpan de Juárez, Estado de México C.P. 53370, MÉXICO

TEL: 52 (01-55) 5312-5612, FAX: 52 (01-55) 5312-3380

M3 Solution Center Monterrey

Av. Morones Prieto No 914. Ote., Local 105 - Plaza Malz Col. La Huerta, C.P.

67140 Guadalupe, N.L., MÉXICO

TEL: 52 (01-81) 8398-8228, 8398-8227 and 8398-8244 FAX: 52 (01-81)

8398-8226

M3 Solution Center Tijuana

Av. 2o. eje Oriente-Poniente No. 19075 Int. 18 Col. Cd. Industrial Nueva Tijuana

C.P. 22500 Tijuana, B. C., MÉXICO

TEL: 52 (01-664) 624-3644 and 624-3645 FAX: 52 (01-664) 647-5024

M3 Solution Center Querétaro

Acceso "C" No. 107 Col. Parque Industrial Jurica C.P. 76100 Querétaro, Qro., MÉXICO

TEL: 52 (01-442) 340-8018, 340-8019 and 340-8020 FAX: 52 (01-442) 340-8017

M³ Solution Center Irapuato

Av. Héroes de Nacozari No. 1655, local A-14 esq. con Boulevard

Villas de Irapuato "Plaza Delta" Col. San Miguelito, C.P. 36557

Irapuato. Gto., MÉXICO

TEL: 52 (01-55) 5312-5612 FAX:52 (01-55) 5312-3380 (Temporary)

Mitutoyo Corporation

20-1, Sakado 1-chome, Takatsu-ku, Kawasaki, Kanagawa 213-8533,
Japan

Phone: 81-44-813-8230 Fax: 81-44-813-8231

Home page: <http://www.mitutoyo.co.jp/global.html>